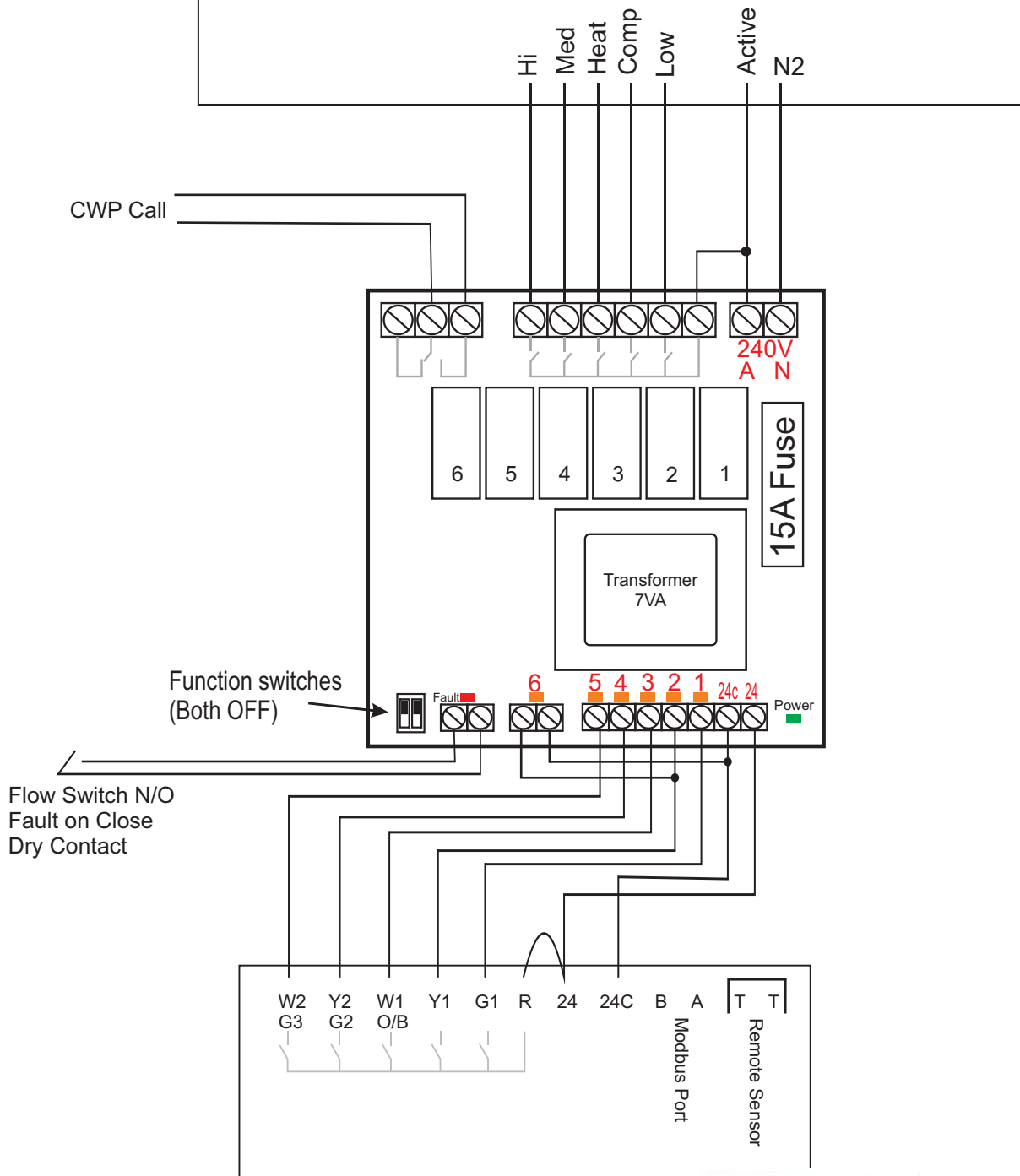


Temperzone HWP-35 to 58



- SW 1 = ON
- SW 2 = ON
- SW 3 = OFF
- SW 4 = ON
- SW 5 = ON
- SW 6 = OFF
- SW 7 = OFF
- SW 8 = OFF



Installation Drawing

Drawing Revision History

Revision	Description	Date	By
1	Initial Issue	16/07/10	John K

Drawing Name
 Temperzone HWP-35
 with Smart temp SMT-770

All care has been taken in the preparation of this drawing however Smart Temp Australia accept no responsibility for damage that may be caused by using this information. This is a guide only.



Smart Temp SMT-770
 Chameleon